

**WWCC Level 3 Instructional Area Reentry Plan
COVID-19 Requirements
Degree Program Specific Information**

Nursing Education, Walla Walla and Clarkston Campuses (Final 9.14.20 kma)

Contact Information for Self-Reporting of Symptoms/Exposure/Infection

- COVID-19 Program Supervisor (Walla Walla): Kathy Adamski 509-527-4241 (office) 509-200-0904 (cell)
- COVID-19 Program Supervisor (Clarkston): Stephanie Macon Moore 509-758-1786 (office) 208-596-5371 (cell)
- COVID-19 Program Supervisor (Clarkston): Chad Miltenberger 509-758-1711 (office)
- WWCC COVID-19 Supervisor: Jacquelyn Meier 509-526-7233
- Walla Walla Community Health Dept. 509-524-2647
- Asotin County Public Health Dept. 509-243-3344

Fall Quarter Classes: NURS 100, 110, 200, 210

- NURS 100 (first-year nursing theory, online except 3 on-campus standardized exams)
 - Site Supervisors: Grace Hiner, Ilona Pease-Verwer, Trina McCoon, Sandra Graham, Patti Becker, Genevieve Bross, Melany Coronado,
- NURS 110 (first-year nursing practicum, online didactic, skills labs on-campus, clinical at local healthcare facilities noted below)
 - Site Supervisors: Instructors noted in NURS 100, Diana Griffin, Kayla Hays, Jamie Coburn, Kerri Finkbiner, Gretchen Heytfelt, Seth Six, Brenda Sellner
- NURS 200 (second-year nursing theory, online except 3 on-campus standardized exams and 2 ATI computerized exams)
 - Site Supervisors: Rob Becker, Lana Toelke, Ruth Hallowell, Brandom Price, Jodi Bice, Kaye McGehee, Lara-Ly Hendrickson
- NURS 210 (second-year nursing practicum, online didactic, skills workshops on-campus, clinical at acute care and community agencies)
 - Site Supervisors: Instructors noted in NURS 200, Diana Griffin, Gricelda Justice, Tami Mitchell, Oskar Rojas, Gretchen Heytvelt, Diana Sampson, Shawntelle Armstrong
- **Location**
 - Walla Walla Campus:
 - Building E classrooms 1706 (24 seats), 1707 (24 seats), 1835 (12 seats), computer lab (12 seats)
 - Skills labs/workshops/skills testing 1720 & 1722 (6 beds) 1834 (4 beds)

- Clinical: Skilled Nursing Facilities, Providence St. Mary Medical Center, Kadlec Medical Center, Community healthcare agencies
 - Clarkston Campus:
 - Health Science Building 2105 (23 seats), 2107 (23 seats), 2114 (5 seats), 125B computer lab (12 seats)
 - Skills labs/workshops/skills testing 2118 (5 beds), 144 (4 beds)
 - Clinical at Skilled Nursing Facilities, St. Joseph Regional Medical Center, Community healthcare agencies
- **Supervisor/Instructor entry & exit times**
 - Before fall quarter- mandatory skills testing for returning students and optional student practice time for second-year students
 - Dates/times TBA, a separate combined Level I and Level II on campus calendar will be updated as available
 - Beginning Sept. 21, 2020
 - See separate combined Level I and Level II calendars for Walla Walla and Clarkston skills labs and on-campus testing
 - Student entry 15 minutes prior to on-campus activity, breaks approximately every hour while in labs with physical distancing
- **Entry & Exit Locations**
 - Walla Walla: Northeast double-doors (first-floor activities) and East single door (second-floor activities)
 - Clarkston Health Science building: Enter South double-doors, exit West doors
 - Clarkston Main building: Enter South entrance, leave West and North doors

COVID-19 Safety Training and Protocols

Employees and students will:

- Complete [COVID-19 Canvas-based training](#)
- Review and adhere to all rules and protocols in [WWCC Safe Back to School Plan Fall 2020](#)
- Complete the [Daily COVID-19 Screening Log](#) before each day on campus

Nursing Education Specific Safety Protocols/Practices are noted below:

Physical Distancing

Informing Employees and Students of Physical Distancing:

- The supervising faculty member will post and review on Day 1 on campus the following with students:

- WWCC Safe Back to School Plan Highlights Fall 2020
- Review of Nursing Student Safety Training (Highlights)
- A door for entry will be identified for students. They will be checked in by the supervising faculty member while observing 6 feet distancing.
- The supervising faculty member will ask whether the student has completed the online Daily COVID-19 Screening Log before allowing the student on campus.

Preventing Gatherings of Students and Maintaining 6 Feet Physical Distancing:

- Students will be allowed a break after each hour of Skills Lab activity
- Breaks and restroom trips will be staggered to prevent gatherings
- As weather permits, students will be encouraged to take breaks outside

Identified “Choke” Points and High-Risk Areas for Congregation:

- Restrooms: male restrooms will have every other urinal closed to encourage physical distancing; female restrooms (with multiple stalls) will allow 2 persons per restroom. Students should be no closer than 6 feet in the sink area of restrooms.
- Sink areas: students must remain 6 feet from the person ahead of them (sinks are outlined in the campus maps in the appendices)

Steps Taken to Minimize Interactions During Class Activities and Ensure 6 Feet Physical Distancing:

- Each student is assigned a “bed space” where they will remain in their “6 feet bubble”
- Supplies needed for the lab will be placed on the table at the foot of the bed by the instructor prior to lab
- If a student needs a chair, one will be provided in their bed space; no use of the common tables in the middle of the labs

Scheduling of Students to Minimize Interactions:

- Students have been scheduled in their lab groups of either 4-5 or 5-6 students per lab depending on which lab room they are assigned
- The last 15 minutes of each nursing Skills Lab activity is reserved for doing cleaning and sanitization of the bed space where they were assigned.
- Classrooms will be sanitized by custodial services after an on-campus test

Personal Protective Equipment (PPE)

PPE Appropriate for Nursing Skills > 6-Feet Physical Distancing:

- Students, faculty, and staff will wear face coverings/masks during the lab.
 - They will be encouraged to bring their own face covering; if they do not have one, a disposable mask will be provided

- Students, faculty, and staff will do an initial handwashing upon entry into the skills lab and simulation, and wash hands or use hand sanitizer hourly while in the lab.
- Students will wear their face covering, disposable gloves, and face shield to do cleaning/sanitizing if using Virex or other disinfectant spray that may splash eyes.

PPE Appropriate for Nursing Skills < 6-Foot Physical Distancing:

For the nursing skills that require a student to pair with another student to perform the skill, students will do the following prior to beginning the activity with < 6 feet distancing:

- Change from their cloth face covering and replace it with a disposable mask approved for “Medium Risk” exposure (“Right Mask for the Right Task” from CDC)
- Don disposable, non-sterile, nitrile exam gloves
- Don a disposable, clear plastic face shield (each student is issued their own face shield)
- Don a clean, non-sterile isolation gown (if these have not been received by the time of the lab, students will wear a clean, patient gown to protect their scrubs). Gowns will be laundered professionally.

After these skills have been performed by the student pairs, they will take off the disposable gowns/gloves/face shield, complete hand hygiene, and don their personal face covering.

Sanitization and Cleanliness

Handwashing with Soap and Running Water:

- Each lab classroom has adequate sinks for the number of students attending the lab (see maps in the appendices)
- Students will do a 20 second hand wash upon arrival and at the end of lab when leaving
- If a student leaves the lab for a restroom or other break, they will do a 20 second hand wash upon entry back to the lab.
- For those occasions when students are on campus to perform standardized nursing exams in the classroom, they will use hand sanitizer before and after entry.

Use of Hand Sanitizer:

- There will be individual hand sanitizer at each bed space
- Students will be instructed to use hand sanitizer at least hourly while in the lab

Signage for Proper Hygiene:

- As noted in the WWCC “Safe Back to School Plan” Fall, 2020

Cleaning and Disinfecting of Worksite and High Touch Surfaces/Tools/Equipment:

- Instructor announces the opening and closing cleaning and disinfecting procedure for students to complete each lab session as part of the class
- Cleaning supplies will be available at each bedside.
- Student will bring their personal face shield and disinfect it upon entry to the lab.
- All lab equipment used during the session will be disinfected between students and at end of lab session.
- High touch surfaces including table-tops, door handles, light switches, countertops, handles, desks, phones, keyboards faucets, sinks, and hard surfaces on beds will be disinfected with Virex spray (or other disinfectant protocol if changed by the college) after each lab session. Plastic sheets and vinyl pillow covers will be used on manikin beds. Face covering, face shield, and gloves must be worn when using Virex spray.
 - If using Virex disinfectant, it will be sprayed on hard surfaces and allowed to work for a minimum of 10 minutes before wiping off with a clean wash cloth. If the college revises the recommendation for disinfectant use, the updated protocol will be used.
 - Manikins will be disinfected per supplier's cleaning instructions with individual sanitizing wipes
- Visibly dirty surfaces will be cleaned with soap and water prior to disinfecting.
- There will be a minimum of 15-30 minutes between lab sessions to ensure that disinfectant solution has had ample time to work.

Disinfecting an Area of an Employee Who Feels Sick and Goes Home:

The area will be cordoned off until WWCC Facilities staff can deep clean/disinfect per WWCC Safe Back to School Plan Fall 2020

Employee Health/Symptoms

As noted in the WWCC Safe Back to School Plan Fall 2020

Location Visitors

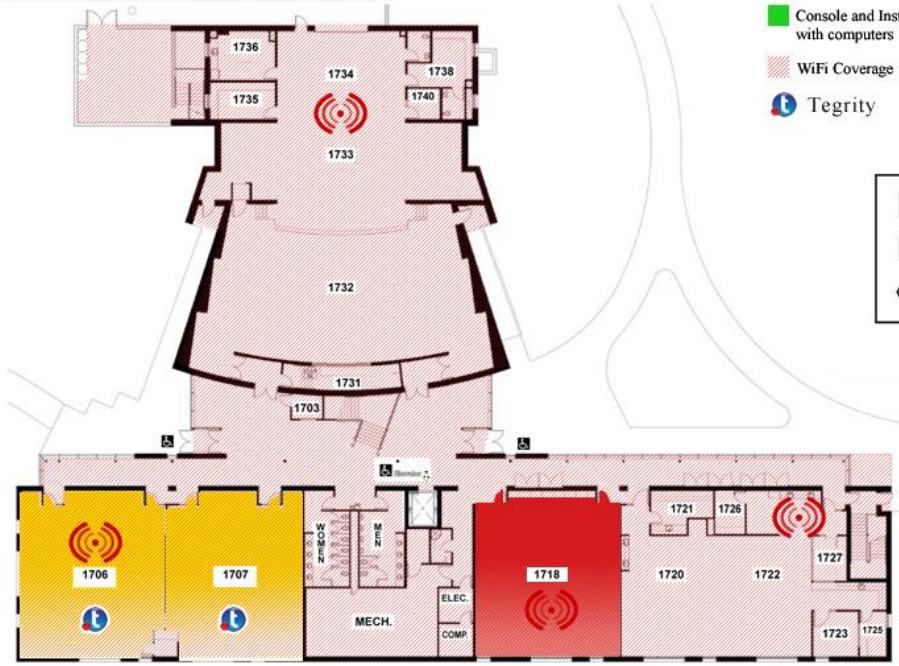
No visitors or vendors will be allowed in the Health Science Building, Skills Labs and Simulation rooms unless approved by WWCC Executive Leadership Team.

Appendix A: Nursing Assistant Skills Labs, Walla Walla, 1st Floor Health Science Building

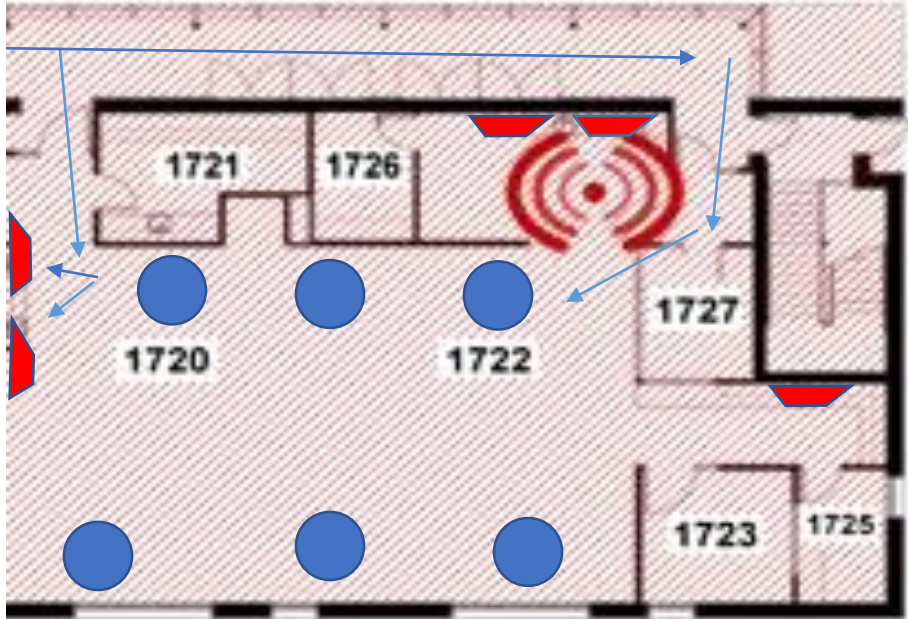
**Health Science & Performing Arts Center (E)
Rooms 1703-1836**

- ITV Rooms
- Open Computer Lab
- Teacher Console Only
- Console and Instructional Classroom with computers
- WiFi Coverage
- Tegrity

- M Mens Restroom
- W Womens Restrooms
- P Courtesy Phone



Main Floor



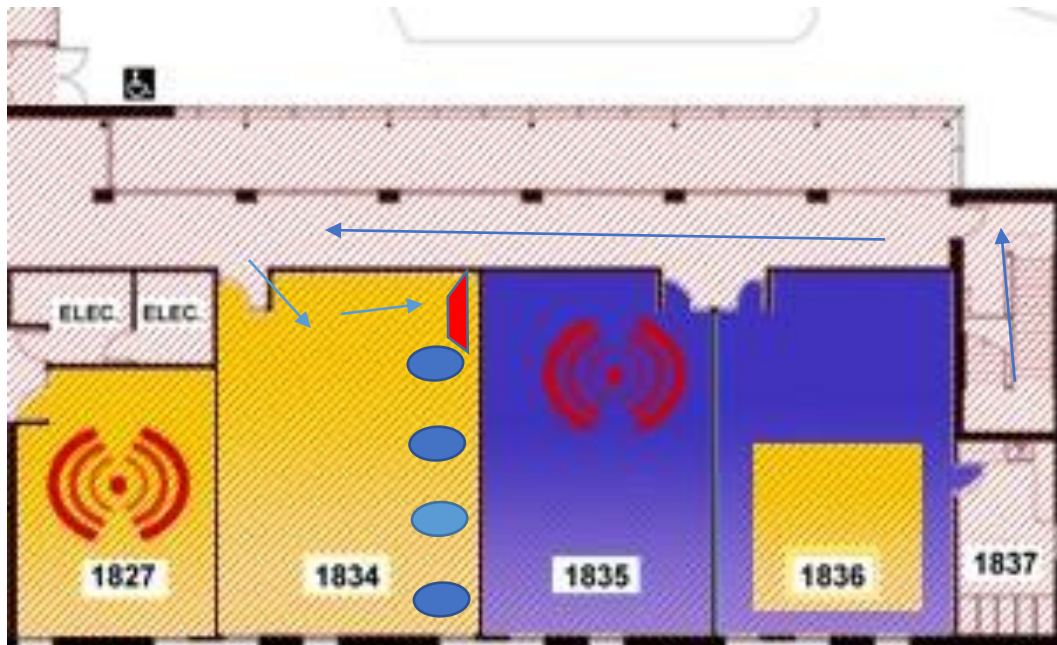
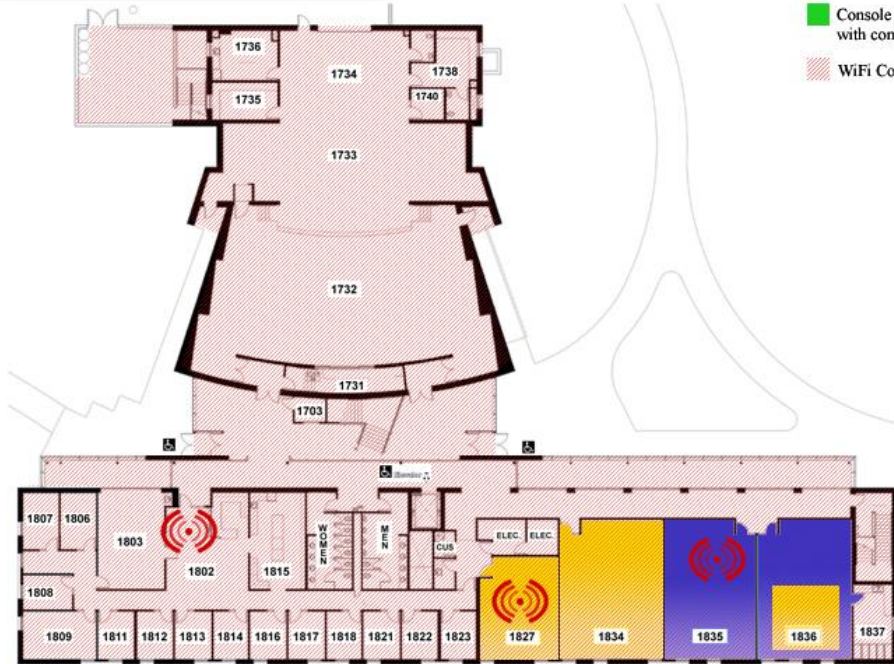
Main Floor

Appendix B: Room 1834 for Nursing Skills Labs, Walla Walla, 2nd Floor Health Science Building

**Health Science & Performing Arts Center (E)
Rooms 1703-1836**

- ITV Rooms
- Open Computer Lab
- Teacher Console Only
- Console and Instructional Classroom with computers
- WiFi Coverage

- M Mens Restroom
- W Womens Restrooms
- P Courtesy Phone



Appendix C: Clarkston Health Science Building Nursing Skills Lab

Clarkston Health-Science Bldg

