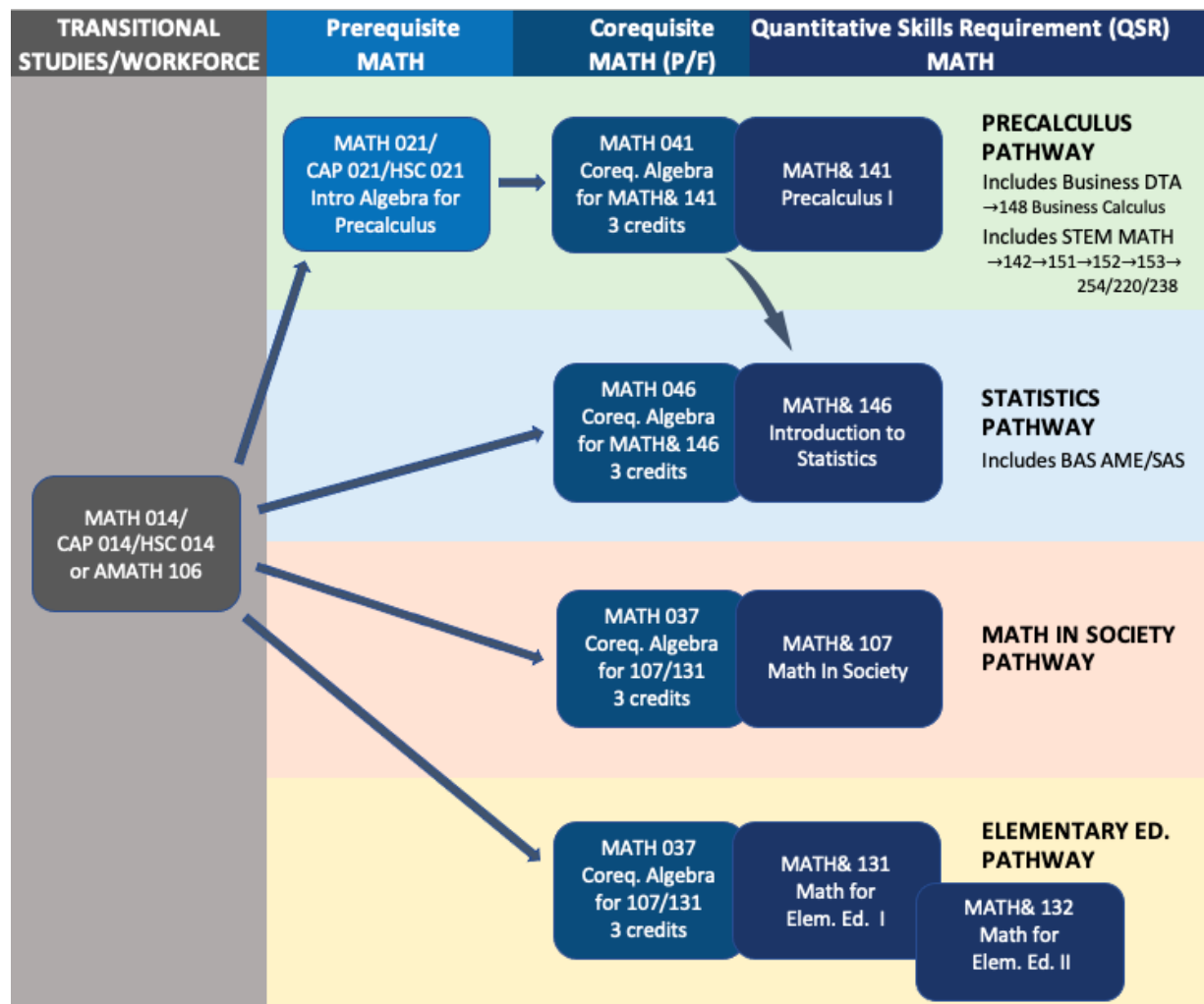


## MATH COREQUISITES AT WALLA WALLA COMMUNITY COLLEGE

If you require precollege-level math support to complete your college-level MATH course, this page is for you! Starting Fall Quarter 2021, instead of taking a precollege MATH class first (as a “prerequisite”) you take it at the same time as your college-level class (called “corequisite”). For example, what was three quarters and 15 credits (MATH 75, 78, 146) will now be one quarter and 8 credits (MATH 146 + 046).



Each corequisite support course must be taken together with the college-level course; the college-level course may be taken with or without the support course, depending on your placement. Your placement will be determined by a guided self-placement tool or by your previous placement or course completion:

Previous Placement	Or Course Completed	New Placement Precalculus Pathway	New Placement Other Pathways
71	NA	021 (Consider 014.)	037/107, 037/131, 046/146 (Consider 014.)
75	71	021	037/107, 037/131, 046/146
78/79	75	041/141	037/107, tab/131, 046/146
80	78	041/141	107, 131, 146
NA	79/80	141	107, 131, 146

Should you take more than one QSR course, there are crosswalks between the MATH pathways:  
 037→146,  
 046→107/131  
 041→107/131/146.

If you need both MATH& 141 and MATH& 146, place into the Precalculus Pathway and move beyond the MATH 041 level before taking MATH& 146; shifting into the Precalculus Pathway from other pathways requires new placement and could require additional precollege support. Please reach out to your advisor or a member of the Mathematics Department with questions. We look forward to working with you!